

MONTHLY MEMBERSHIP PROGRESS REPORT

LOCATION IOWA

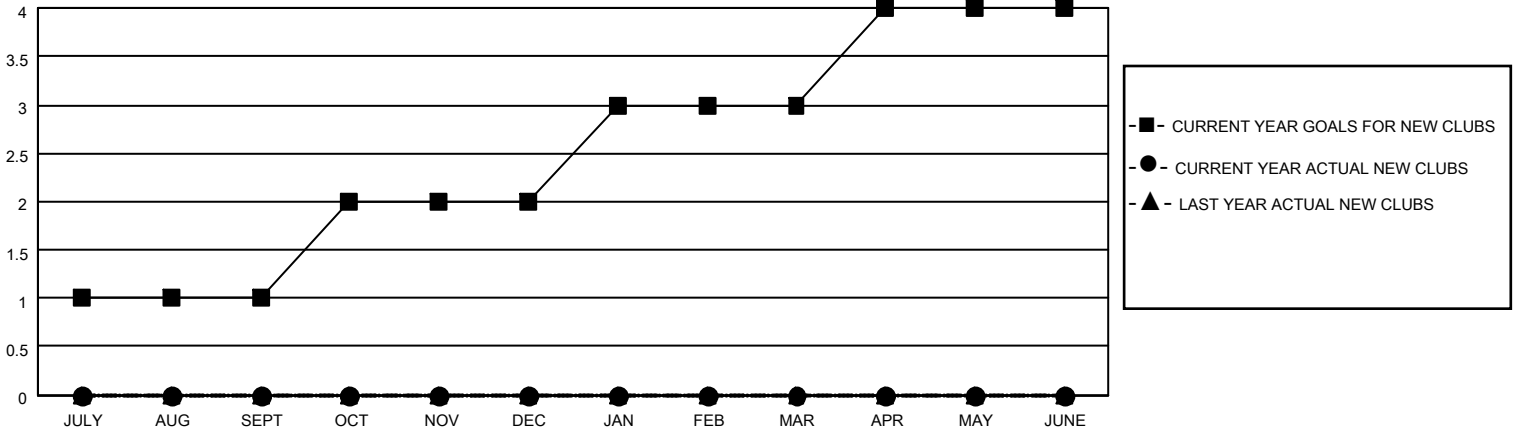
District 9 SW

Results as of: 6/30/2021

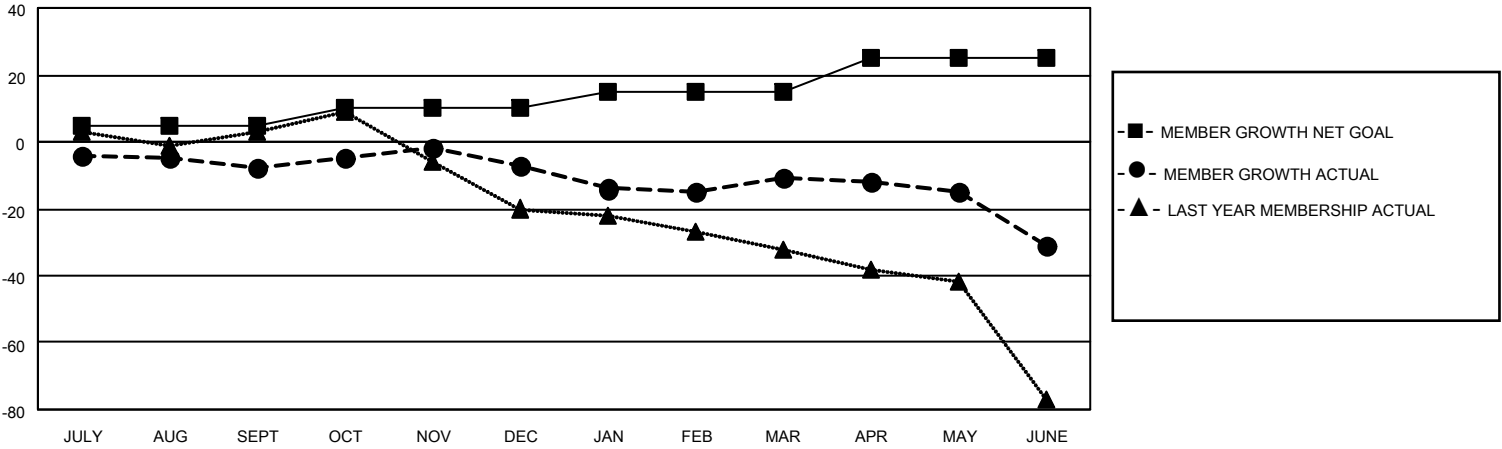
Clubs			
RESULTS FOR 2020-2021			
QUARTER	NEW CLUB GOAL	NEW CLUBS	DROPPED CLUBS
JULY/AUG/SEPT	1	0	0
OCT/NOV/DEC	1	0	0
JAN/FEB/MAR	1	0	0
APR/MAY/JUNE	1	0	0

Members			
RESULTS FOR 2020-2021			
QUARTER	MEMBER GROWTH NET GOAL	MEMBER GROWTH ACTUAL	DROPPED MEMBERS ACTUAL (including transfers)
JULY/AUG/SEPT	5	36	36
OCT/NOV/DEC	5	30	27
JAN/FEB/MAR	5	15	17
APR/MAY/JUNE	10	57	55

GOALS AND ACTUAL NEW CLUBS CUMULATIVE



GOALS AND ACTUAL MEMBERS CUMULATIVE



DROPPED CLUBS: 0	29 CLUBS OF 51 ADDED 1 OR MORE NEW MEMBERS	<u>GENDER DISTRIBUTION</u>
<u>DROPPED MEMBERS</u>		MALE 876 (67.13%)
DECEASED 26		FEMALE 429 (32.87%)
CLUB CANCELLED 0		TOTAL FAMILY UNIT MEMBERS 391
OTHER 109		FAMILY MEMBERS PAYING HALF DUES 199
TOTAL 135	CLICK HERE FOR CUMULATIVE MEMBERSHIP DATA	